

# Chinking and Specialty Sealants

## Perma-Chink®

### The Original Synthetic Chinking for Log Homes

Perma-Chink log home sealant started the company and remains the product for which we are known, even though we have developed a complete system of products for log home care and maintenance. Perma-Chink looks like traditional mortar. It stretches, compresses and tightly adheres to log surfaces to make your log walls weather tight and attractive. It is still the easiest chinking to apply to your log home.

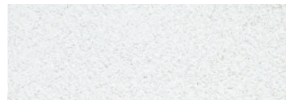
- Highly elastic
- Use for interior and exterior sealing
- Seals gaps 1 inch or wider
  - Maintenance free
- Very low VOC formula
- 10-year warranty
- Compatible with all Perma-Chink Systems wood care products

### Perma-Chink Coverage Rates

Gap Width	Linear Feet per Pail
1/2"	Use Energy Seal
3/4"	Use Energy Seal
1"	385'
1-1/2"	256'
2"	192'
2-1/2"	154'
3"	127'
3-1/2"	110'
4"	96'
4-1/2"	85'
5"	76'
6"	63.5'

1 Pail = approximately fifty five 11 oz. tubes

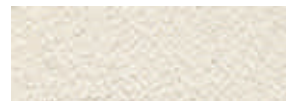
1 Pail = approximately twenty 30 oz. tubes



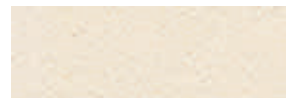
White #207



Stone #211



Light Gray #212



Sandstone #215



Beige #216



Tan #219



Brown #223



Medium Gray #224

Color representations are as close as possible to actual colors. Application techniques and other factors will affect the actual color when finished. We supply samples for evaluation.

#### Surface Preparation:

Must be clean and dry and free of oils and wax. Proper backing materials and/or bond breaker must be used.

#### Application Rates:

See coverage rate table.

#### Application Temperature:

40° F to 90° F

#### Application Methods:

Chink Pump.  
Bulk loading gun.  
Caulk gun.  
Application bags.

#### # of Coats:

Apply at 3/8" thickness. Do not apply in direct, hot sunlight.

#### Drying Time:

Skins over in 20 minutes.  
Complete curing may take 3 to 8 weeks depending on temperature and humidity.

#### Clean up:

Soap and water.

#### Packaging:

11 oz. tubes.  
30 oz. tubes.  
5 gallon pail.

#### Storage/Shelf Life:

Freeze/thaw stable.  
1 year.



Schroeder Log Home Supply, Inc.  
1-800-359-6614 [www.loghelp.com](http://www.loghelp.com)



## LOG HOME SEALANT

- Provides a weather-tight between logs.
- Excellent for new construction or restoration.
- Remains flexible even in extreme climates.
- Authentic traditional appearance.
- Easy to apply.
- Soap and water clean up.
- 5 year limited replacement warranty.

**Made in USA**

**CAUTION: DO NOT TAKE INTERNALLY**

### Directions For Use

#### STEP #1: INSPECTION

If applying to an older home, check for signs of rot and decay. Remove and replace or repair deteriorated wood. Contact any Perma-Chink Systems office for information about wood repairs.

#### STEP #2: SURFACE PREPARATION

All surfaces should be clean, dry and free from oil, dirt or other foreign matter. Use appropriate materials to clean and prepare surfaces. Perma-Chink Log Home Sealant is best applied after the home has been stained. We strongly recommend the use of any LIFELINE™ brand exterior stain and topcoat. If an oil-based stain has been applied, allow it to dry at least two weeks before applying Perma-Chink Log Home Sealant.

#### STEP #3: BACKING MATERIALS

Perma-Chink Log Home Sealant should only be applied over approved substrates. When selecting the width of Grip Strip to use on round logs, the joint width should be approximately  $1/6$ " the diameter of the logs ( $10"$  diameter logs;  $10" \div 6 = 1.67"$ ). Obtain a copy of our "Log Home Sealant Application Guide" from any Perma-Chink Systems location for information about suitable backing materials and substrates.

#### STEP #4: APPLICATION

Do not apply in direct sunlight or when the temperature is less than 40° F. Perma-Chink Log Home Sealant may be applied with a bulk loading caulk gun, grout bag or high volume chink pump. Hold the applicator tip firmly against the back surface and apply. If several beads of chinking are required to fill a gap, place them close together to avoid entrapped air. Apply enough sealant to maintain a wet thickness of at least  $5/16"$  and no more than  $1/2"$  across the entire joint after tooling. Only apply as much sealant as you can tool in about 15 minutes. Once the joint is filled, spray with a light mist of water and tool smooth with a trowel or spatula. If the width of the trowel is close to the width of the joint, the smoothing process will be easier. Make sure there is good contact between the Perma-Chink and the exposed edges of the top and bottom logs. If you are a first time applicator, start work on a less visible area until you become familiar with the process.

#### STEP #5: DRYING AND CURING TIME

Protect freshly applied Perma-Chink from direct rainfall for a minimum of 24 hours. When draping a wall with plastic film, allow some airspace between the wall and the plastic to facilitate drying. Sheets of cardboard may also be used to cover newly applied Perma-Chink to prevent "chinking inspectors" from leaving finger dents in the uncured chinking.

Drying time and curing time are two entirely different terms. In warm or hot weather, Perma-Chink will begin to skin over in as little as ten minutes while a complete cure may take three to four weeks. Cooler weather will slow both the drying time and curing process.

#### STEP #6: CLEANUP

Clean area and equipment immediately with warm, soapy water before the Perma-Chink dries. For removing Perma-Chink that has dried, soften with alcohol and then clean with warm water. Please do not pollute our environment. Dispose of containers and unused material in accordance with local, state, and federal regulations.

#### STEP #7: MAINTENANCE

Periodic cleaning with an appropriate cleaner such as Log Wash™ will clean off dust and dirt and accentuate the beauty of your home. We recommend that log walls be washed down at least twice a year. Small rips and tears may be repaired using a bead of Perma-Chink and a damp short bristled brush to blend it in with the surrounding area. Tears greater than one foot long should be cut out and the chinking replaced.

#### STEP #8: STORAGE

Store Perma-Chink out of direct sunlight and **protect from freezing**. Although Perma-Chink is freeze-thaw stable, if the product is accidentally frozen, allow to thaw, mix well and check for suitability of use before applying.

**Request a copy of our "Log Home Sealant Application Guide" from any Perma-Chink Systems office for additional information about applying and maintaining Perma-Chink Log Home Sealant.**

#### Perma-Chink Log Home Sealant Limited Five Year Warranty

Perma-Chink Systems, Inc. warrants that when Perma-Chink Log Home Sealant is applied according to the label directions that (1) Perma-Chink Log Home Sealant will not pull away from log surfaces and (2) Perma-Chink Log Home Sealant will remain elastic and not tear when subjected to normal joinery movement for a period of five (5) years from the date of purchase.

This five year warranty applies only to Perma-Chink Log Home Sealant that has been applied over approved substrates and does not apply to application over existing chinking. Contact your nearest Perma-Chink Systems location for information regarding approved substrates and application methods.

Remedy under this limited warranty is limited to the replacement of product that does not comply with specifications and specifically excludes consequential damages, labor and other associated costs or products. No other warranties are expressed or implied. Warranty does not apply to specially formulated product or colors. To obtain replacement material, contact any Perma-Chink Systems location. Perma-Chink Systems, Inc. reserves the right to inspect any structure before product replacement.

This transferable limited warranty applies only in the United States and Canada and is limited to product replacement as set forth above.