

BEE Gone®

CONCENTRATE

DIRECTIONS FOR USE

It is a violation of Federal Law to use this product in a manner inconsistent with its labeling. Failure to follow the directions for use and precautions on this label may result in poor pest control or plant injury.

For use as a surface spray. Do not allow adults, children, or pets to enter the treated area until sprays have dried. Do not apply this product in a way that will contact adults, children, or pets, either directly or through drift.

USE INFORMATION

This product is non-staining to most home siding depending on age and cleanliness. However, before using in areas where the spray may contact home siding (vinyl siding, in particular), test in an inconspicuous area and recheck in a few hours. Do not use if any staining is observed.

This product may be used to control insect pests outdoors as a perimeter treatment around residential buildings. BEE Gone® may also be used to control home-invading insects as a residual spray on outside surfaces, such as walks, garbage areas, window frames, doorways, porches, and patios. Not for use on plants being grown for commercial sale, or plants grown for seed production or sod farms and golf course turf, or in greenhouses or nurseries.

All outdoor applications must be limited to spot or crack-and-crevice treatments only, except for the following permitted uses: (1) Treatment to soil or vegetation around structures; (2) Applications to lawns, turf, and other vegetation; (3) Applications to building foundations, up to a maximum height of 3 feet.

Other than applications to building foundations, all outdoor applications to impervious surfaces such as sidewalks, driveways, patios, porches and structural surfaces (such as windows, doors, and eaves) are limited to spot and crack-and-crevice applications only.

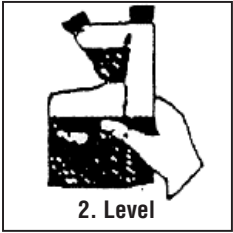
Do not water the treated area to the point of runoff. Do not make applications during rain. Not for use in outdoor residential misting systems.

APPLICATION INSTRUCTIONS: BEE Gone mixes readily with water and is specifically packaged for residential use as a diluted spray. Use a clean sprayer, such as a tank type or hose-end sprayer to mix and apply the proper amount of concentrate with the desired volume of water. For perimeter applications, measure the area to be treated to determine the application volume. For trees, shrubs and flowers, apply as a thorough cover spray until foliage is wet. Refer to Specific Application Instructions in the recommended rate tables for additional instructions.

- Use a hose-end sprayer or sprinkling can to deliver a coarse drenching spray to treat stored lumber or wood piles. Firewood is not to be treated. Stored wood can be used for lumber one month after treatment. Do not apply inside structures.
- Repeat treatment as necessary but not more frequently than once a month. For active termite infestation, consult a professional Pest Control Applicator.

CONTAINER USE DIRECTIONS:

1. Remove the measuring chamber cap and induction seal. Replace cap and securely tighten. Tip container until liquid fills measuring chamber.



2. Return container to level position. No adjustment is needed.
3. Remove measuring chamber cap and dispense into proper application equipment.

HOME-INVADING PESTS (OUTDOOR USE ONLY)	
PEST	SPECIFIC APPLICATION INSTRUCTIONS
Ants (including mounds) Armyworm Bark Beetles Bees	Boxelder Bugs; Elm Leaf Beetles and Gypsy Moth Caterpillars: Spray tree trunks, building siding, or wherever pests congregate. Avoid excessive application. Dampen surface thoroughly, but do not let runoff occur.

(continued)

HOME-INVADING PESTS (OUTDOOR USE ONLY) (continued)	
PEST	SPECIFIC APPLICATION INSTRUCTIONS
Spiders Ticks (including Deer Tick, Western Black-legged Tick known to transport Lyme disease and Rocky Mountain Spotted Fever) Wasps	

IMPORTANT: DO NOT use on vegetables or food crops. DO NOT treat pets with this product. DO NOT spray inside dwellings. DO NOT treat soil that is water saturated or frozen or in any conditions where run-off or movement from the treatment area (site) is likely to occur. DO NOT apply when wind velocity favors drift.

STORAGE AND DISPOSAL

PESTICIDE STORAGE: Keep out of the reach of children or animals. Store in original containers only. Store in a cool, dry place, preferably in a locked storage area and avoid excessive heat. Carefully open containers. After partial use, replace lid and close tightly. Do not put concentrate or dilute material into food or drink containers.

PESTICIDE DISPOSAL: Non-refillable container. Do not reuse or refill this container. Offer for recycling if available.

If empty: Clean container promptly after emptying. Triple rinse as follows: Empty the remaining contents into application equipment or a mix tank and drain for 10 seconds after the flow begins to drip. Fill the container ¼ full with water and recap. Shake for 10 seconds. Pour rinsate into application equipment or a mix tank or store rinsate for later use or disposal. Drain for 10 seconds after the flow begins to drip. Repeat this procedure two more times. Never pour unused product down the drain or on the ground.

HOME-INVADING PESTS (OUTDOOR USE ONLY)

MIXING INSTRUCTIONS

Mix 1.6 fluid oz. (3 1/4 Tablespoons) of BEE Gone Concentrate per 1 gallon of spray solution to make a 0.5% spray emulsion [1 fluid oz. = 2 Tablespoons (T) = 6 teaspoons (tsp)]. Do not use utensils such as spoons and measuring cups after use with pesticides.

HOW TO APPLY

Spot Treatment

- Apply a 0.5% emulsion as a pin stream low-pressure spray or as a paint-on application with a paintbrush.
- Treat where pests are found or entry points of the structure such as window frames, doorways, porches, patios, and foundation.
- Spot-treatment may also be made to garages, garbage cans, and garbage areas.
- DO NOT apply indoors (including crawl spaces).

Perimeter Application

- Spray a 6 to 8 foot wide band of soil around the perimeter of the house. Treat the foundation wall to a height of 2 to 3 feet.
- Use a spray volume of 2 to 10 gallons of 0.5% emulsion per 1000 square feet. If mulch or debris is present, a higher volume application rate may be needed to ensure adequate coverage.
- Note: residual control will vary depending on exposure of the treated area to weathering conditions (temperature, sunlight, moisture). Retreat on a monthly schedule while insects are likely to be active.

Wood Destroying Pests

- Localized Areas Outdoors: for the control of insects such as termites, bees, carpenter ants and wood infesting beetles in localized above-ground areas of infested wood around structures, apply a 0.5% emulsion to voids and galleries in damaged wood and in spaces between wooden members of a structure and between wood and foundations where wood is vulnerable. Apply either as a spray or paint-on application. For termites, the purpose of application is to destroy workers or winged reproductive forms, which may be present at the time of treatment. This product is not designed for preventative use and should only be applied when pests appear. This application is not a substitute for soil or foundation treatment.

HOME-INVADING PESTS (OUTDOOR USE ONLY) (continued)	
PEST	SPECIFIC APPLICATION INSTRUCTIONS
Beetles Borers Boxelder Bugs Carpenter Ants Carpenter Bees Centipedes Chinchbugs Cockroaches Cockroaches (Asian) Crickets Earwigs Elm Leaf Fire Ants (Incl. mounds) Fleas Flies Firebrats Ground Beetles Gypsy Moths (adults & caterpillars) Millipedes Mole Crickets Pill Bugs Scorpions Silverfish Sod Webworm Sowbugs	Borers and Bark Beetles: To prevent infestation of ornamental trees and woody shrubs, spray the bark to the point of saturation, but do not let runoff occur. Repeat treatment every 21 days during early spring until mid-summer. Carpenter Bees: Apply as a pin stream, as a fine/coarse low pressure spray (20 psi or less) as a spot treatment. Fire Ants (mound drench): Apply 1 or 2 gallons of emulsion to each mound area by sprinkling the mound until it is wet and treat a 4-foot diameter circle around the mound. Use higher volume for mounds larger than 12 inches. For best results, apply in cool weather, such as in early morning or late evening hours, but not in the heat of the day. Scorpions: Remove accumulations of lumber, firewood, and other materials which serve as harborage sites and treat beneath and adjacent to infested sites.

(continued)

Environmental Hazards:

This product is extremely toxic to aquatic organisms, including fish and invertebrates. To protect the environment, do not allow pesticide to enter or run off into storm drains, drainage ditches, gutters or surface waters. Applying this product in calm weather when rain is not predicted for the next 24 hours will help to ensure that wind or rain does not blow or wash pesticide off the treatment area. Rinsing application equipment over the treated area will help avoid runoff to water bodies or drainage systems.

This product is highly toxic to bees exposed to direct treatment on blooming crops or weeds. Do not apply this product or allow it to drift to blooming crops or weeds while bees are actively visiting the treatment area.

Do not apply within 25 feet of lakes, reservoirs, rivers, permanent streams, marshes or natural ponds, estuaries and commercial fish ponds. Do not apply when weather conditions favor drift from treated areas. Drift and runoff from treated areas may be hazardous to aquatic organisms in neighboring areas.

Physical or Chemical Hazards: Combustible. Do not use or store near heat or open flame.

WARRANTY AND LIMITATION OF DAMAGES

Seller warrants to those persons lawfully acquiring title to this product that at the time of the first sale of this product by seller this product conformed to its chemical description and that it was reasonably fit for the purposes stated on the product label when used both in accordance with the Direction for Use appearing on the product label and under normal conditions of use. Buyers and users of this product assume the risk of all loss or damage from use or handling of this product that results from their failure to read and comply with the Directions for Use of this product which appear on the product label. SELLER MAKES NO OTHER EXPRESS OR IMPLIED WARRANTY, INCLUDING ANY OTHER EXPRESS OR IMPLIED WARRANTY OF FITNESS OR OF MERCHANTABILITY, AND NO AGENT OF SELLER IS AUTHORIZED TO DO SO. Unless expressly prohibited by state law, the liability of seller for any breach of warranty shall not exceed the purchase price of the product as to which a claim is made. BEE Gone™ is a trademark of ISK Americas Incorporated.